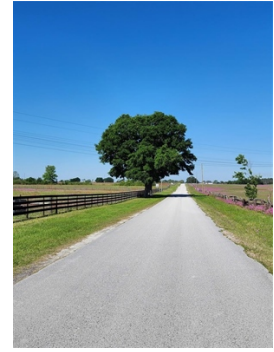


FIVE, 10+ ACRE PARCELS

Multiple Lots | from 299,900



NW 102nd Boulevard, Wildwood, FL 34785

- » MLS #: MULTIPLE
- » Agriculture | Lot: 10.3 acres
- » On a paved road in an area characterized by similar acreage parcels
- » The flat, cleared land is all high and dry, offering optimal conditions
- » Easy access via a five-minute drive to I-75
- » More Info: NW102nd.com



Dawn Giachetti Realtor
(352) 874-2100 (cell)
(407) 233-1288 (e-fax)
DawnGiachetti@gmail.com
<http://www.dawngiachetti.com/>

Premier Sotheby's International Realty
15430 County Road 565A
Suite C
Groveland, FL 34736

This flat, cleared land is all high and dry, offering optimal conditions. With easy access via a five-minute drive to I-75, residents enjoy proximity to Orlando International Airport within about an hour, as well as major attractions such as Disney and Universal Studios. Additionally, The Villages and Brownwood are just approximately 15 minutes away, providing convenient access to restaurants, shopping, and services. Despite the close proximity to amenities, residents can relish the peaceful ambiance of the countryside with agricultural potential and neighboring custom homes. Interested in expanding your

