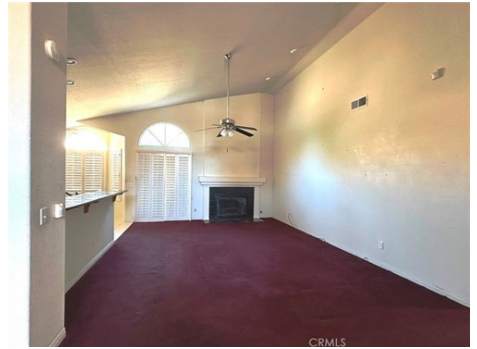




\$ 399,990



38712 LA Mancha Ct, Palmdale, CA 93550

- » Beds: 3 | Baths: 1 Full
- » MLS #: SR24202295
- » Single Family | 1,927 ft² | Lot: 6,607 ft²
- » More Info: 38712LaMancha.com



Anngel Benoun
 Randy Saunders
 (818) 521-4035
 (818) 645-8575
 Anngel4re@earthlink.net
<https://Anngelbenoun.evrealstate.com>

Engel and Voelkers Encino
 17279 Ventura Blvd.
 Encino, CA 91316
 (818) 728-2200

MULTIPLE OFFERS. BEST AND FINAL OFFERS DUE NO LATER THAN WEDNESDAY 10/9/24 AT 4:00 PM. Probate Sale! Incredible opportunity on this single level cul-de-sac home in a sought-after community. Terrific curb appeal includes a driveway & walkways of pavers with curbing & landscaping rock in front, as well as low maintenance landscaping. This 1990 built home has high and vaulted ceilings, spacious rooms and ceiling fans throughout. Front door opens to a large living room with high ceilings, transom windows, and two ceiling fans. The den, located off the living room, has built-in bookshelves. The home has an eat-in kitchen with tiled flooring, granite countertops, pull-out drawers and breakfast bar opening up to the family room. This family room enjoys a fireplace and sliding glass doors and shutters leading out to the patio. The bedroom wing includes 3 bedrooms and two baths. The primary suite has sliding doors to the rear yard, as well as plantation and some security shutters. This suite also boasts a walk-in closet and a bathroom with tiled flooring, dual sinks and separate shower and tub. Hall bathroom has tile flooring and dual sinks, and the other two bedrooms are well sized, with ceiling fans and security shutters. The large, covered patio is great for entertaining and overlooks the attractive, low maintenance yard with more curbing and landscaping rock. The attached three car garage is fantastic with endless cabinetry

